

**Analysis**

The Club House of the Golf Course is situated on a key corner, the roundabout intersection of Park Road, Gladstone Road and Tullaroop Road.

Residential development is dense and a concrete footpath begins. *Prunus blireiana* is used as a nature strip tree the beneath power lines which run on the left hand side of the road. The view cone to the hospital chimney is strong.

The curve in the road exposes a significant view across the green oasis of Princes Park. There are several impressive homes lining the right side of the road, overlooking the park. established street trees, elms and plain trees line the roadway.

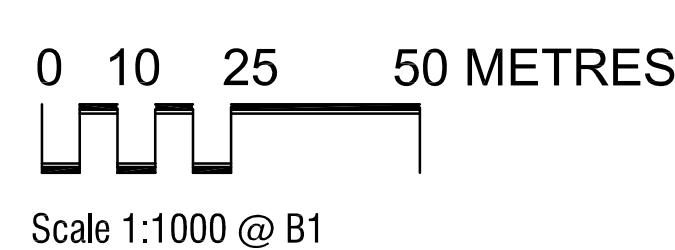
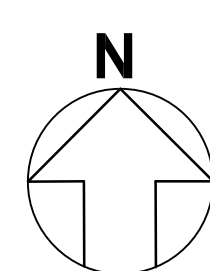
**Opportunities**

1. Improve landscape treatment and directional signage at the roundabout at Tullaroop Road.
2. Plant larger street trees on the right hand side of the road, where they will not affect the power lines
3. Install feature signage at Princes Park - the corner of Holyrood Street and Park Road.



Figure 12c

**GATEWAY - PARK ROAD, Bendigo**  
**MARYBOROUGH URBAN DESIGN FRAMEWORK**  
**CENTRAL GOLDFIELDS SHIRE COUNCIL**



PRINT ISSUE:

REVISIONS:

Drawn: C. Tattersall  
 Date: 27th Jan 2005

**Michael Smith and Associates**  
 Landscape Architecture and Urban Design  
 5 Jervis Street, Camberwell, 3124  
 Tel: 9830 0414 Fax: 9830 2555

In Association With:  
 Peter McNabb & Associates P/L  
 Brecknock Consulting P/L  
 Donald Walker & Associates P/L  
 SD Consultants P/L  
 Traffix Group P/L